



**CHD  
GROUP**  
nurturing a healthy world

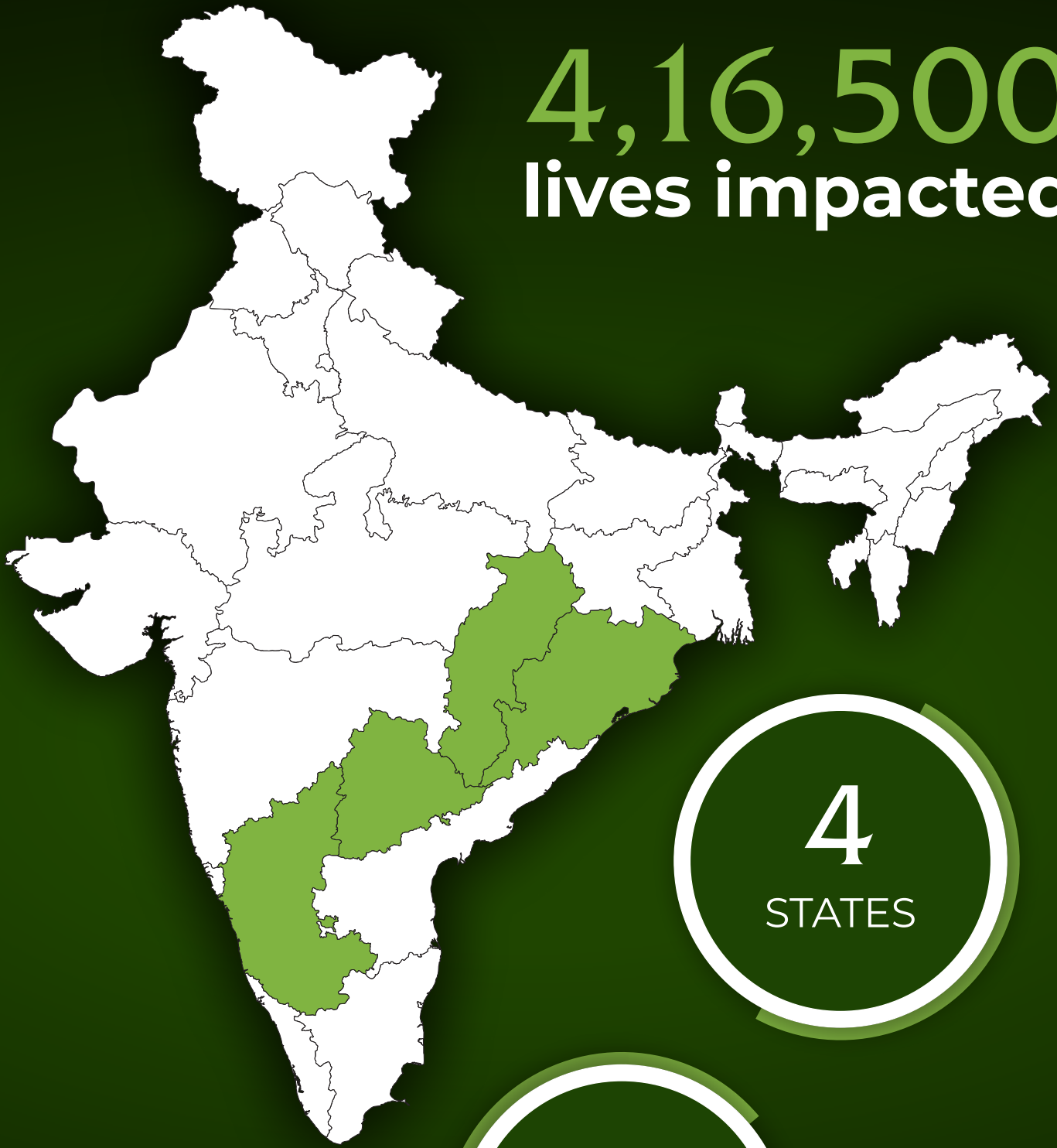
# ALL INDIA LOCKDOWN SUPPORT

MARCH to JULY 2020 REPORT

[www.chdefforts.org](http://www.chdefforts.org)

**COVID - 19**  
CORONAVIRUS

4,16,500  
lives impacted



4  
STATES

14  
DISTRICTS

972  
VILLAGES

**States Catered To:**

- Karnataka
- Orissa
- Telangana
- Chhattisgarh

# Statement of Gratitude

CHD Group places sincere gratitude to the Prime Minister's Office, India and Niti Aayog and all State Governments, Private Sector firms, individual donors, our colleagues and volunteers who came forward risking their lives on the frontline in securing and safeguarding civilians in India by nature of sustained development and immediate needs.

## Background

India has faced her toughest times since World War II and while everyone was staying safe at the homes, CHD Group teams were on the ground reaching door-to-door in providing safety protective gears, giving nutritious dry food ration, supporting by way of promoting scientifically important COVID-19 content and myth busting fake news, providing epidemiological inputs to administrations and securing the nation's needs to the extend possible.

## Highlights from the Ground



**60,000** - Government certified reusable mask, hand gloves, sanitizers and disinfectants distributed to the farmers, daily wage workers, old age homes, rural development officials and panchayats representatives.



**20 Tonnes** - Dry food ration reached door to door to vulnerable groups.



**2,00,000** - IEC promotions.



**1,50,000** - COVID-19 safety handouts prepared as per the Ministry of Health and Family Welfare, distributed in 5 different local languages.



On-the-go hygiene and sanitation practices & detailed information on myth busting, do's and dont's were properly demonstrated for local villagers.

# Promoting nutritious & energy rich dry food ration to vulnerable communities comprising of the following :



## Rice

349 kilocalories (kcal) per 100gm of Rice



## Sugar

400 kilocalories (kcal) per 100gm of Sugar



## Toor Dal

90.45 kilocalories (kcal) per 100gm of Toor Dal



## Attachakki

340 kilocalories (kcal) per 100gm of Wheat



## Dalia

111 kilocalories (kcal) per serving



## Salt

an important ingredient to add flavor to food



## Tea powder

30 kilocalories (kcal) per cup



## Chilli powder

282 kilocalories (kcal) per 100gm of Chilli Powder



## Turmeric Powder

354 kilocalories (kcal) per 100gm of Turmeric Powder

# Safety Kits distributed includes the following:



## Support through IEC on COVID-19

**CHD GROUP Rapid Response 2020 - Covid19**  
Protecting Farmers. Promoting Food Security

#BuildBackBetter #CHDGroup #PuttingIndiaFirst #SolidarityWithFarmers

### नोवल कोरोनावायरस (COVID-19)

को बुझ्न सकिने? / को बुझ्न सकिने? / को बुझ्न सकिने?

COVID-19 परीक्षण को आवश्यकता — कतरी आवश्यक?

रोगी व्यक्ति को जति लक्षणहरू देखिए, जति छोटो समयमा लक्षणहरू देखिए, जति COVID-19 को परीक्षण गरियो, उति तपाईंको व्यक्तिगत स्वास्थ्यमा राम्रो हो

**किन जोसो का परीक्षण करना है**

यसको जति अधिको लक्षणहरू देखा परेका हुन्, उति तपाईंको स्वास्थ्यमा राम्रो हो

- COVID-19 परीक्षण गर्नु आवश्यक छ किनभने तपाईंको स्वास्थ्यमा राम्रो हो
- तपाईंको स्वास्थ्यमा राम्रो हो किनभने तपाईंको स्वास्थ्यमा राम्रो हो
- तपाईंको स्वास्थ्यमा राम्रो हो किनभने तपाईंको स्वास्थ्यमा राम्रो हो
- तपाईंको स्वास्थ्यमा राम्रो हो किनभने तपाईंको स्वास्थ्यमा राम्रो हो
- तपाईंको स्वास्थ्यमा राम्रो हो किनभने तपाईंको स्वास्थ्यमा राम्रो हो
- तपाईंको स्वास्थ्यमा राम्रो हो किनभने तपाईंको स्वास्थ्यमा राम्रो हो
- तपाईंको स्वास्थ्यमा राम्रो हो किनभने तपाईंको स्वास्थ्यमा राम्रो हो
- तपाईंको स्वास्थ्यमा राम्रो हो किनभने तपाईंको स्वास्थ्यमा राम्रो हो

आपस में कम से कम 1 मीटर की दूरी, सम्झी सुरक्षा के तिरु जरुरी

1075 (टोल फ्री) | 011-23978046

**CHD GROUP Rapid Response 2020 - Covid19**  
Protecting Farmers. Promoting Food Security

#BuildBackBetter #CHDGroup #PuttingIndiaFirst #SolidarityWithFarmers

### NOVEL CORONAVIRUS COVID-19

नोवल कोरोनावायरस COVID-19

को बुझ्न सकिने? / को बुझ्न सकिने? / को बुझ्न सकिने?

COVID-19 परीक्षण को आवश्यकता — कतरी आवश्यक?

रोगी व्यक्ति को जति लक्षणहरू देखिए, जति छोटो समयमा लक्षणहरू देखिए, जति COVID-19 को परीक्षण गरियो, उति तपाईंको स्वास्थ्यमा राम्रो हो

**प्रयोगशालाको मूलाधारक प्रयोगहरू**

- COVID-19 परीक्षण गर्नु आवश्यक छ किनभने तपाईंको स्वास्थ्यमा राम्रो हो
- तपाईंको स्वास्थ्यमा राम्रो हो किनभने तपाईंको स्वास्थ्यमा राम्रो हो
- तपाईंको स्वास्थ्यमा राम्रो हो किनभने तपाईंको स्वास्थ्यमा राम्रो हो
- तपाईंको स्वास्थ्यमा राम्रो हो किनभने तपाईंको स्वास्थ्यमा राम्रो हो
- तपाईंको स्वास्थ्यमा राम्रो हो किनभने तपाईंको स्वास्थ्यमा राम्रो हो
- तपाईंको स्वास्थ्यमा राम्रो हो किनभने तपाईंको स्वास्थ्यमा राम्रो हो
- तपाईंको स्वास्थ्यमा राम्रो हो किनभने तपाईंको स्वास्थ्यमा राम्रो हो
- तपाईंको स्वास्थ्यमा राम्रो हो किनभने तपाईंको स्वास्थ्यमा राम्रो हो

**समाजमा राम्रो स्वास्थ्यको लागि आवश्यक**

आपस में कम से कम 1 मीटर की दूरी, सम्झी सुरक्षा के तिरु जरुरी

**CHD GROUP Rapid Response 2020 - Covid19**  
Protecting Farmers. Promoting Food Security

#BuildBackBetter #CHDGroup #PuttingIndiaFirst #SolidarityWithFarmers

### नोवल कोरोनावायरस (COVID-19)

को बुझ्न सकिने? / को बुझ्न सकिने? / को बुझ्न सकिने?

COVID-19 परीक्षण को आवश्यकता — कतरी आवश्यक?

रोगी व्यक्ति को जति लक्षणहरू देखिए, जति छोटो समयमा लक्षणहरू देखिए, जति COVID-19 को परीक्षण गरियो, उति तपाईंको स्वास्थ्यमा राम्रो हो

**निरोगी र अर्थव्यवस्थाको विकासको लागि आवश्यक**

आपस में कम से कम 1 मीटर की दूरी, सम्झी सुरक्षा के तिरु जरुरी

**CHD GROUP Rapid Response 2020 - Covid19 MISSION KISAAN**  
An Initiative of Corteva Agrisciences in collaboration with CHD Group

#BuildBackBetter #CHDGroup #PuttingIndiaFirst #SolidarityWithFarmers

को बुझ्न सकिने? / को बुझ्न सकिने? / को बुझ्न सकिने?

COVID-19 परीक्षण को आवश्यकता — कतरी आवश्यक?

रोगी व्यक्ति को जति लक्षणहरू देखिए, जति छोटो समयमा लक्षणहरू देखिए, जति COVID-19 को परीक्षण गरियो, उति तपाईंको स्वास्थ्यमा राम्रो हो

**को बुझ्न सकिने? / को बुझ्न सकिने? / को बुझ्न सकिने?**

आपस में कम से कम 1 मीटर की दूरी, सम्झी सुरक्षा के तिरु जरुरी



# Food Ration, Preventive Health, Occupational Safety and Farm Development Activities:



# Testimonial

“

About 80% of families like ours, didn't know how we were going to arrange our next day meal. We are very grateful to CHD Team for their kindness and efforts to reach us with Dal, Rice, Oil, etc and also giving mask and soaps and gloves for protection- **beneficiary**

”



“

CHD doctor and her team were very nice in explaining and clearing all the Covid-19 related doubts, and hygiene to all our village farmers. They also presented on how to use the disinfectants on the farm tools. We are very thankful to them for giving us hand gloves, masks, sanitizer and disinfectant - **beneficiary**

”

“

We are thankful to CHD team for coming to our village and supporting us with food ration for one month for our family- **beneficiary**

”



“

CHD team didn't just helped the villagers but also helped our panchayat team and officials here- **beneficiary**

”

“

CHD Doctor with his team was very kind to give us preventive health needs and also address our primary health concerns. Their inputs on social health aspects were most beneficial. - **beneficiary**

”





# Conclusion

Extra-ordinary times like these calls for extra-ordinary support, but it is important to engage in holistic and sustained development and not ad-hoc COVID-19 standalone support only. CHD Group continues to work along with partners in the Government and among the private sector in shaping sustainable development towards re-imagining a post COVID-19 world.





# CHD GROUP WORK DURING THE NATIONAL LOCKDOWN

## UNCERTAIN TIMES IN CITIES

Study says nearly half of India's urban population live in fear of unemployment; many hit by pay cuts

SV KRISHNA CHAITANYA @Chennai

**T**HE lockdown has hurt India hard. There has been a substantial loss of lives and livelihoods. A recent survey has shown that nearly half the people surveyed in urban India live in fear of unemployment. A large number of respondents said they have not been receiving the same monthly income during the lockdown.

A worryingly large number of respondents face difficulties in access to essential commodities as well as medicines and healthcare facilities, even in the urban centres. Inadequate ac-

cess to healthcare facilities during the lockdown can result in potential exacerbations of pre-existing illnesses.

Furthermore, access constraints were highest among respondents from the states of Maharashtra, Tamil Nadu, Delhi, Andhra Pradesh and Karnataka, which also collectively account for nearly 60% of Covid-19 cases in India, the survey report reads. The survey, conducted by the CHD Group, included a total of 604 respondents across various states of India.

The responses were collected between April 15-25. Majority of the respondents were working professionals and were

from Karnataka (24.2%) followed by Kerala (21.5%), Maharashtra (8.7%) and Tamil Nadu (8.6%). In the Central and Northern belt, majority of the respondents were from Chhattisgarh (5.6%) and Delhi (3.5%).

Dr Edmond Fernandes, CEO of CHD Group and Senior Fellow with Atlantic Council, told Express that though the survey

sample size is relatively small, it does represent and highlight the problems faced by the larger section of society. "The study exposes the concerns of the powerful Indian middle class, frontline voices and those who are exposed to a number of issues on a daily basis from time to time."

According to Centre for Monitoring Indian Economy (CMIE), India's unemployment rate has spiked to 26.2 per cent during the lockdown. Another survey has reported that over 100 million jobs in India are at risk. "Of the 457 currently employed respondents, 39.8 per cent admitted having fear of

unemployment and 2.6 per cent respondents reported already losing their jobs. Further, 24 per cent reported not getting paid," Fernandes said.

The government's plea to employers have had limited influence on layoffs in the country. Although salary reduction is a preferable temporary option than permanent layoffs, long term job security post-lockdown can only be ensured through implementation of effective policies which factors in relief measures not just for industries, but also non-government organisations, start-ups and small ventures, the survey concluded.

**Q** The study exposes the concerns of the powerful Indian middle class, frontline voices and those who are exposed to a number of issues on a daily basis from time to time

Dr Edmond Fernandes, CEO, CHD Group



[Click here to read more](#)

Forbes INDIA

Magazine

Lists

Web Specials

Thought Leadership

...

Home / Forbes India Blogs

CORONAVIRUS

## Can Covid-19 mark a new age for health and development?

The pandemic has exposed the marketed idea that western health care systems, such as those in the US and Europe, are the 'best'. Here are some lessons we can learn



BY DR. EDMOND FERNANDES & DELMA COELHO

FOLLOW ON: Full Bio

3 min read

UPDATED: May 12, 2020 10:42:19 AM UTC



[Click here to read more](#)



## THE TIMES OF INDIA

[Home](#) [Blogs](#) [Times View](#) [Readers' Blog <sup>Now</sup>](#) [Times Evoke](#) [City](#) [India](#) [World](#) [Entertainment](#) [Sports](#) [Lifestyle](#) [Environment](#)

News » Blogs » Lifestyle Blogs » With coronavirus, the golden age for global public health has dawned

### With coronavirus, the golden age for global public health has dawned

March 20, 2020, 10:13 PM IST

[Edmond Fernandes](#) in [Global Health Focus](#) | [Lifestyle](#) [World](#) | [TOI](#)

Blame it on the mainstream media, or blame it on social media or blame it on whoever you can, irrespective of what you do, the saga of coronavirus has mainstreamed the importance of global public health like never before in the history of human kind.

[Click here to read more](#)

live **mint**



### Focus on the health system to tackle covid

3 min read . Updated: 18 May 2020, 07:31 PM IST

[Kanika Batra Modi](#), [Edmond Fernandes](#)

[Click here to read more](#)



## THE TIMES OF INDIA

[Home](#) [Blogs](#) [Times View](#) [Readers' Blog <sup>Now</sup>](#) [Times Evoke](#) [City](#) [India](#) [World](#) [Entertainment](#) [Sports](#) [Lifestyle](#) [Environment](#)

News » Blogs » Business Blogs » Companies Blogs » Leadership & corporate social responsibility in a post [Covid19](#) world

### Leadership & corporate social responsibility in a post [Covid19](#) world

April 29, 2020, 12:11 PM IST

[Edmond Fernandes](#) in [Global Health Focus](#) | [Companies](#) | [TOI](#)

A post [Covid19](#) world calls for a leadership that is kind and inclusive. But the vision proposition that companies and healthcare enterprises can bring must solely be built on values.

[Click here to read more](#)

## CHD Group Supports over 50,000 Farmers across 220 Villages of India

By Press Release - May 9, 2020



CHD Group – a global health organisation, is supporting farmers across the country with support from Corteva agriscience. India is heavily dependent on agrarian economy, and farm produce to feed the billion beats nation. March to May is harvest season where over 250 lakh quintals of seeds for the Kharif season is necessary. This is a very crucial time where farmers make a living usually for a year.

[Click here to read more](#)

## CHD Group supports over 50,000 farmers across 220 villages of India

Team NK | May 14, 2020 01:31:11 PM (IST)



Mangaluru: CHD Group – a global health organization is supporting farmers across the country with support from Corteva agriscience. India is heavily dependent on agrarian economy and farm produce to feed the billion beats nation. March to May is harvest season where over 250 lakh quintals of seeds for the Kharif season are necessary. This is a very crucial time where farmers make a living usually for a year.

[Click here to read more](#)



# CHD GROUP ACHIEVES SUSTAINABLE DEVELOPMENT GOAL 2, 3 & 8

2 ZERO HUNGER



3 GOOD HEALTH AND WELL-BEING



8 DECENT WORK AND ECONOMIC GROWTH





**CHD  
GROUP**  
nurturing a healthy world

**Head Office:**

CHD Group, 1st Floor, Fernandes Enclave,  
Melina Mogeru, Falnir, Mangaluru- 575002,  
Karnataka, India

Tell: +91 824 4116824 | Web: [www.chdefforts.org](http://www.chdefforts.org)  
E-mail: [headquarters@chdefforts.org](mailto:headquarters@chdefforts.org)

Only for Special Circulation

